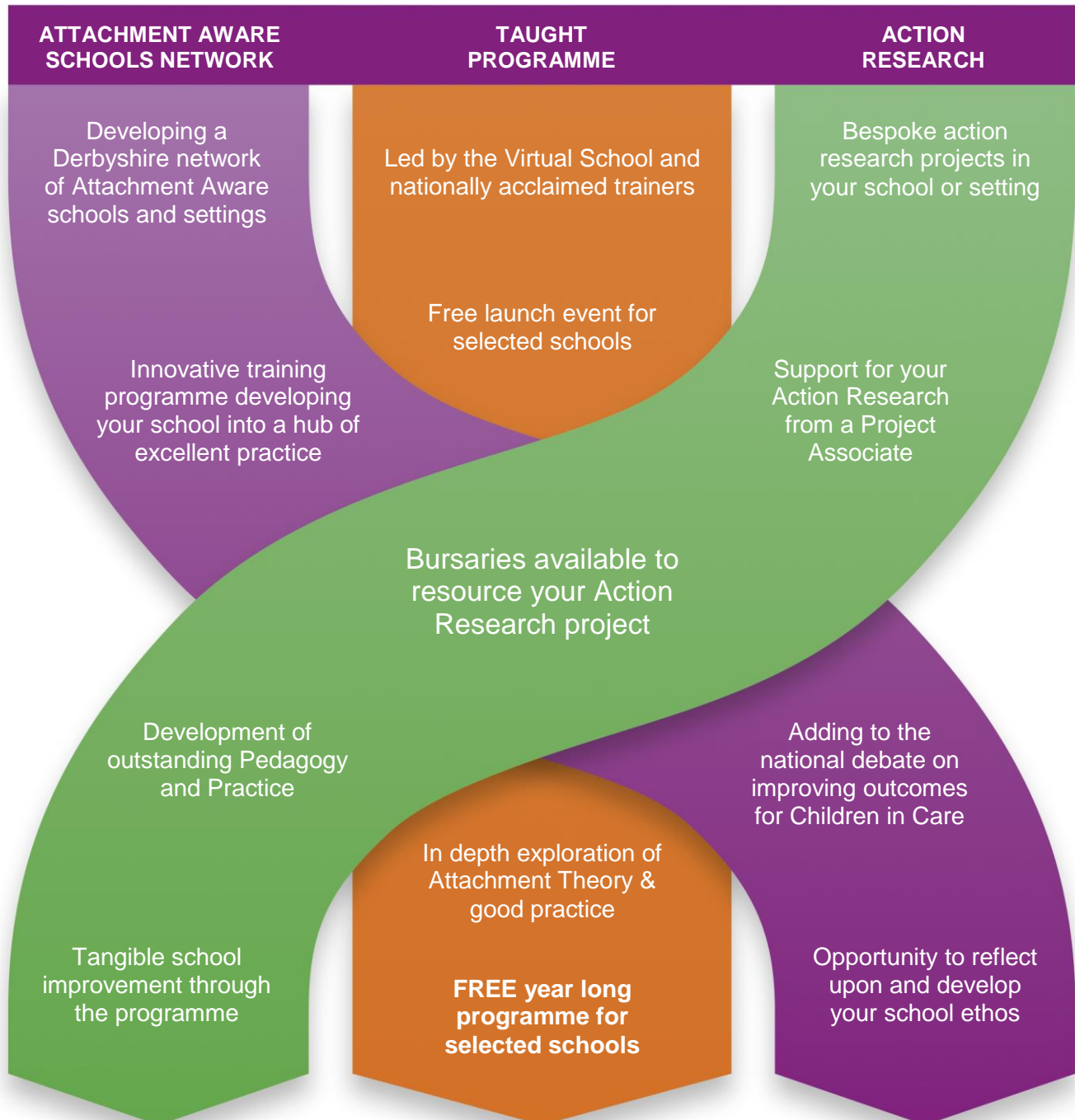


Attachment Aware Schools

A Safe Space, a Nurturing Learning Community



Derbyshire's Virtual School wants to work in partnership with you to raise understanding of the issues faced by Children in Care and vulnerable learners. We have developed an exciting and innovative year long programme described below.



Lizzie Watt - Assistant Head Teacher: Innovation, Teaching & Learning

Dr Paul Kelly - Specialist Senior Educational Psychologist

For further information contact the Virtual School on **01629 538028** or email: virtualschool@derbyshire.gov.uk